

Improve **SPEED • PRODUCTIVITY • PRECISION** with



A full suite of wireless enabled precision gages!

Your opportunity to add
“error-free, accurate data collection”
to your operation.

Wireless Enabled Gages Include:

- Digital depth gages
- Digital micrometers
New for 2019 “quick drive spindle” models
- Digital calipers
- Digital dial indicators



Innovative Digital Calipers, Micrometers and Indicators with Integrated Wireless



Innovative Hand Tools

Why Collect Measurement Data?

- Observation of production tolerances – manufacturing cost optimization
- Optimization of manufacturing process
- Identification of methodical mistakes
- Quality documentation for customers
- Quality documentation from suppliers
- Recognition and confidence on the part of the business partner



The MarConnect i-Stick

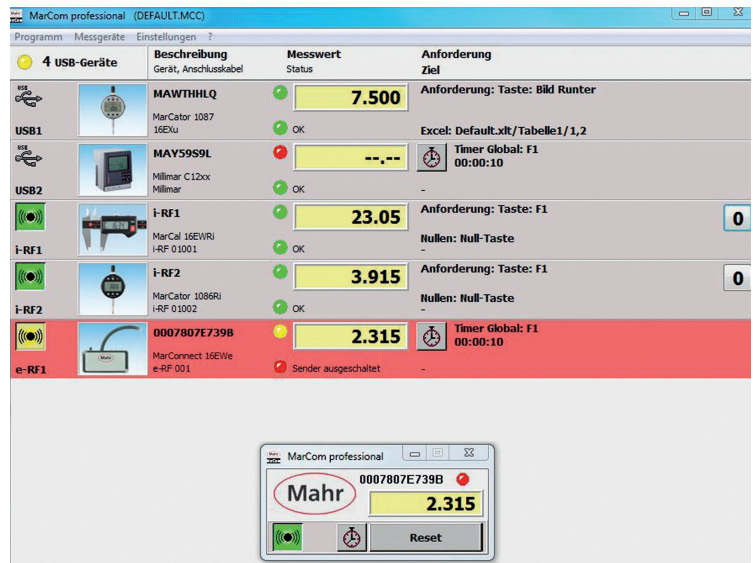


Scan the QR code to watch simple and practical applications

Benefits of Marcom

Integrated Wireless Data Collection

- Transparent, accurate data collection with Integrated Wireless
- Less cluttered work areas, no tripping over gage-related cables
- Significant cost savings over plug-in transmitters – wireless data collection at the price of a cable
- Cost savings in workpiece scrap and inaccurate data entry
- Flexible, real-time manipulation and monitoring of data and transfer to third party data collection software



FREE MarCom Professional 5.2 Software Interface



Conventional measuring station – with cable connection



Innovative measuring station – with Integrated Wireless

For more information please visit or contact

30540 SE 84th St. Unit 2
 Preston, WA 98050
 Cell 360-513-5676
 Office 425-222-9567 • Fax 425-222-9568
 Email dhaskell@precisetoolco.com
 Website: www.precisetoolco.com



“Specialists in Precision Measurement and Quality Shop Tools”